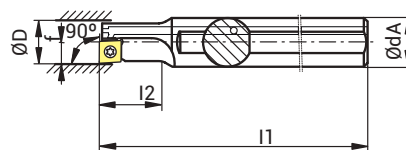
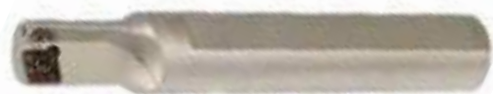
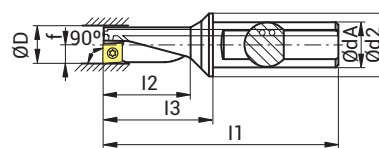


1.5D - 2.25D
ECOCUT



Ref.	Plaquita Insert	Dimensiones Dimensions (mm)					Nm
		D _{min}	dA	I1	I2	f	
ECC 08L-1.5D 04	XC...0401...	8	12	80	12,0	4,0	0,4
ECC 08R-1.5D 04	XC...0401...	8	12	80	12,0	4,0	0,4
ECC 10L-1.5D 05	XC...0502...	10	12	90	15,0	5,0	0,7
ECC 10R-1.5D 05	XC...0502...	10	12	90	15,0	5,0	0,7
ECC 12L-1.5D 06	XC...0602...	12	16	100	18,0	6,0	1,0
ECC 12R-1.5D 06	XC...0602...	12	16	100	18,0	6,0	1,0
ECC 14L-1.5D 07	XC...0703...	14	16	110	21,0	7,0	1,2
ECC 14R-1.5D 07	XC...0703...	14	16	110	21,0	7,0	1,2
ECC 16L-1.5D 08	XC...0803...	16	20	125	24,0	8,0	2,2
ECC 16R-1.5D 08	XC...0803...	16	20	125	24,0	8,0	2,2
ECC 18L-1.5D 09	XC...09T3...	18	25	135	27,0	9,0	2,2
ECC 18R-1.5D 09	XC...09T3...	18	25	135	27,0	9,0	2,2
ECC 20L-1.5D 10	XC...10T3...	20	25	150	30,0	10,0	3,2
ECC 20R-1.5D 10	XC...10T3...	20	25	150	30,0	10,0	3,2
ECC 25L-1.5D 13	XC...1304...	25	32	180	37,5	12,5	5,0
ECC 25R-1.5D 13	XC...1304...	25	32	180	37,5	12,5	5,0
ECC 32L-1.5D 17	XC...1705...	32	40	200	48,0	16,0	5,0
ECC 32R-1.5D 17	XC...1705...	32	40	200	48,0	16,0	5,0

Tornillo de inserción Insert screw
11807484
11807480
11684214
11684216
11227305
11610311
11801441

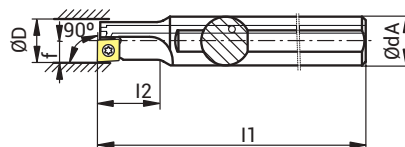


Ref.	Plaquita Insert	Dimensiones Dimensions(mm)							Nm
		D _{min}	dA	d2	I1	I2	I3	f	
ECC08L-2.25D04	XC...0401...	8	10	15	60,0	18,0	22,0	4	0,4
ECC08R-2.25D04	XC...0401...	8	10	15	60,0	18,0	22,0	4	0,4
ECC10L-2.25D05	XC...0502...	10	12	18	69,5	22,5	27,5	5	0,7
ECC10R-2.25D05	XC...0502...	10	12	18	69,5	22,5	27,5	5	0,7
ECC12L-2.25D06	XC...0602...	12	16	22	78,0	27,0	33,0	6	1,0
ECC12R-2.25D06	XC...0602...	12	16	22	78,0	27,0	33,0	6	1,0
ECC14L-2.25D07	XC...0703...	14	16	23	83,5	31,5	38,5	7	1,2
ECC14R-2.25D07	XC...0703...	14	16	23	83,5	31,5	38,5	7	1,2
ECC16L-2.25D08	XC...0803...	16	20	28	94,0	36,0	44,0	8	2,2
ECC16R-2.25D08	XC...0803...	16	20	28	94,0	36,0	44,0	8	2,2
ECC18L-2.25D09	XC...09T3...	18	25	36	109,5	40,5	53,5	9	2,2
ECC18R-2.25D09	XC...09T3...	18	25	36	109,5	40,5	53,5	9	2,2
ECC20L-2.25D10	XC...10T3...	20	25	35	111,0	45,0	55,0	10	3,2
ECC20R-2.25D10	XC...10T3...	20	25	35	111,0	45,0	55,0	10	3,2
ECC25L-2.25D13	XC...1304...	25	32	44	129,0	56,5	69,0	12,5	5,0
ECC25R-2.25D13	XC...1304...	25	32	44	129,0	56,5	69,0	12,5	5,0
ECC32L-2.25D17	XC...1705...	32	40	54	158,0	72,0	88,0	16	5,0
ECC32R-2.25D17	XC...1705...	32	40	54	158,0	72,0	88,0	16	5,0

Tornillo de inserción Insert screw
11807484
11807480
11684214
11684216
11227305
11610311
11801441

TALADRADO
DRILLING

3.0D
ECOCUT



Ref.	Plaquita Insert	Dimensiones Dimensions (mm)					Nm	Tornillo de inserción Insert screw
		D _{min}	dA	I1	I2	f		
ECC 08L-3.0D 04 H	XC...0401...	8	12	80	24	4,0	0,4	11807484
ECC 08R-3.0D 04 H	XC...0401...	8	12	80	24	4,0	0,4	11807480
ECC 10L-3.0D 05 H	XC...0502...	10	12	85	30	5,0	0,7	11684214
ECC 10R-3.0D 05 H	XC...0502...	10	12	85	30	5,0	0,7	11684214
ECC 12L-3.0D 06 H	XC...0602...	12	16	95	36	6,0	1,0	11684216
ECC 12R-3.0D 06 H	XC...0602...	12	16	95	36	6,0	1,0	11684216
ECC 14L-3.0D 07 H	XC...0703...	14	16	100	42	7,0	1,2	11227305
ECC 14R-3.0D 07 H	XC...0703...	14	16	100	42	7,0	1,2	11227305
ECC 16L-3.0D 08 H	XC...0803...	16	20	110	48	8,0	2,2	11610311
ECC 16R-3.0D 08 H	XC...0803...	16	20	110	48	8,0	2,2	11610311
ECC 18L-3.0D 09 H	XC...09T3...	18	25	125	54	9,0	2,2	11801441
ECC 18R-3.0D 09 H	XC...09T3...	18	25	125	54	9,0	2,2	11801441
ECC 20L-3.0D 10 H	XC...10T3...	20	25	130	60	10,0	3,2	
ECC 20R-3.0D 10 H	XC...10T3...	20	25	130	60	10,0	3,2	
ECC 25L-3.0D 13 H	XC...1304...	25	32	150	75	12,5	5,0	
ECC 25R-3.0D 13 H	XC...1304...	25	32	150	75	12,5	5,0	
ECC 32L-3.0D 17 H	XC...1705...	32	40	185	96	16,0	5,0	
ECC 32R-3.0D 17 H	XC...1705...	32	40	185	96	16,0	5,0	

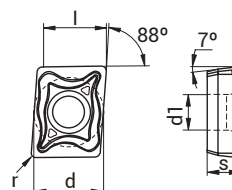
XCET



P	●	●	●	
M	●	○	●	
K	●	○	●	○
N		○		●
S		●		●
H				

● Aplicación principal
Main use

○ Aplicación complementaria
Complementary use



Ref.	KP125	KP135	KM145	H10T	Medidas Dimensions				
					d	l	s	r	d1
XCET 040102FL-27Q				✓	5,4	4,3	1,8	0,4	2,10
XCET 040102FR-27Q				✓	4,6	4,2	2,1	0,5	2,25
XCET 040104FL-27Q				✓	5,3	4,8	2,3	0,6	2,25
XCET 040104FR-27Q				✓	5,9	5,5	2,5	0,6	2,50
XCNT 040102EL	✓	✓	✓		6,5	6,1	2,9	0,7	2,50
XCNT 040102ER	✓	✓	✓		7,7	7,3	3,3	0,8	2,90
XCNT 040104EL	✓	✓	✓		8,9	8,5	3,8	0,8	3,50
XCNT 040104ER	✓	✓	✓		10,1	9,6	4,4	0,8	4,10

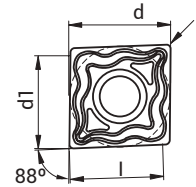
XCET



P	●	●	●	
M	●	○	●	
K	●	○	●	○
N		○		●
S		●		●
H				

● Aplicación principal
Main use

○ Aplicación complementaria
Complementary use



Ref.	Kp125	Kp135	Km145	H10T	Medidas Dimensions				
					l	d	s	r	d1
XCET 050202FN-27Q				✓	5,80	5,00	2,10	0,20	2,25
XCET 050204FN-27Q				✓	5,80	5,00	2,10	0,40	2,25
XCET 060202FN-27Q				✓	6,50	6,00	2,38	0,20	2,50
XCET 060204FN-27Q				✓	6,50	6,00	2,38	0,40	2,50
XCET 070304FN-27Q				✓	7,60	7,00	3,18	0,40	2,80
XCET 080304FN-27Q				✓	8,50	8,00	3,18	0,40	3,40
XCET 09T304FN-27Q				✓	9,60	9,00	3,97	0,40	3,40
XCET 10T304FN-27Q				✓	10,60	10,00	3,97	0,40	4,40
XCET 10T308FN-27Q				✓	10,60	10,00	3,97	0,80	4,40
XCET 130404FN-27Q				✓	13,50	12,50	4,76	0,40	5,30
XCET 130408FN-27Q				✓	13,50	12,50	4,76	0,80	5,30
XCET 170508FN-27Q				✓	17,50	16,00	5,56	0,80	5,30
XCNT 050202EN	✓	✓	✓		5,80	5,00	2,10	0,20	2,25
XCNT 050204EN	✓	✓	✓		5,80	5,00	2,10	0,40	2,25
XCNT 060202EN	✓	✓	✓		6,50	6,00	2,38	0,20	2,50
XCNT 060204EN	✓	✓	✓		6,50	6,00	2,38	0,40	2,50
XCNT 070304EN	✓	✓	✓		7,60	7,00	3,18	0,40	2,80
XCNT 080304EN	✓	✓	✓		8,50	8,00	3,18	0,40	3,40
XCNT 09T304EN	✓	✓	✓		9,60	9,00	3,97	0,40	3,40
XCNT 10T304EN	✓	✓	✓		10,60	10,00	3,97	0,40	4,40
XCNT 10T308EN	✓	✓	✓		10,60	10,00	3,97	0,80	4,40
XCNT 130404EN	✓	✓	✓		13,50	12,50	4,76	0,40	5,30
XCNT 130408EN	✓	✓	✓		13,50	12,50	4,76	0,80	5,30
XCNT 170508EN	✓	✓	✓		17,50	16,00	5,56	0,80	5,30